

Embryo Flushing Plus

Product Description

Embryo Flushing Plus (EFP) is used to flush embryos from the uterus of super-ovulated donor animals. RLI EFP contains the surfactant polyvinyl alcohol (PVA) and the antibiotics kanamycin sulphate and gentamicin. The EFP is filtered with a 0.22 µm membrane filter during the manufacturing process.

RLI EFP is prepared for commercial and research use and is *embryo culture tested*. RLI EFP has been prepackaged in 1000-mL and 2000-mL infusion bags, each with two ports: one needle septum port and one spike port.

A room temperature range is recommended for RLI EFP storage, but it may also be refrigerated at 2-8°C. RLI EFP should be used by its expiration date and should be discarded if a precipitate forms.

For more information about EFP, please visit www.renovalife.com.

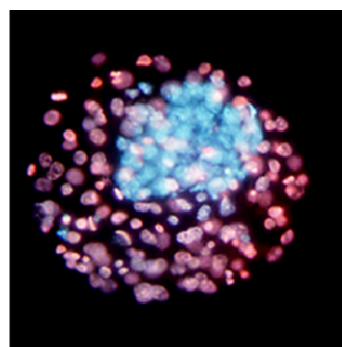
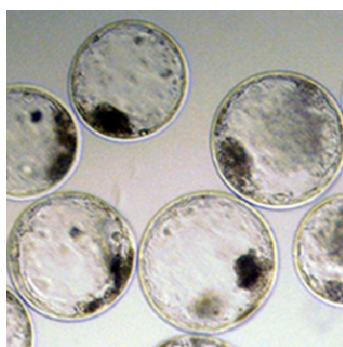
For Animal Use Only.

Cat # RLI-EFP 01: 1000 mL/bag

\$20 plus S&H

Cat # RLI-EFP 02: 2000 mL/bag

\$30 plus S&H



Production of cattle embryos. Expanded bovine blastocysts were flushed from donor cows. Inner cell mass cells (blue) were distinguished from TE cells (pink) after immune-staining with specific antibodies. Offspring were produced after transfer of thawed embryos into recipient cows.

Ordering Information:

<http://www.renovalife.com/EFP.php>

Send your order by email: info@renovalife.com

By fax: 301-576-5078

By phone: 301-246-0868

Mon.-Fri. 9:00Am-5:00Pm Eastern time

Payment Information:

We accept Visa, MasterCard, Discover, American express cards and company checks (make check payable to: Renova Life Inc.)

