

Embryo Flushing Supreme

Cat # RLI-EFS 01: 1000 mL/bag

\$21 plus S&H

Cat # RLI- EFS 02: 2000 mL/bag

\$35 plus S&H

Product Description

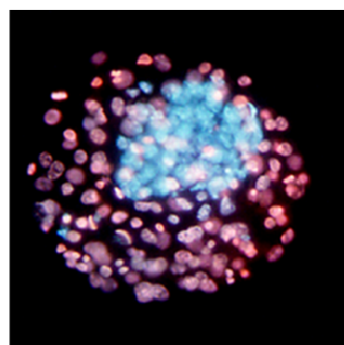
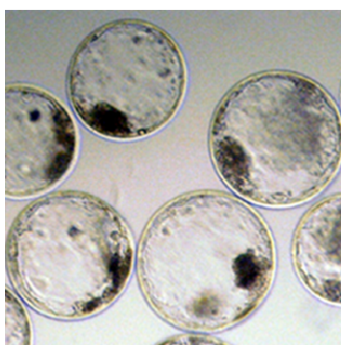
Embryo Flushing Supreme (EFS) is used to flush embryos from the uterus of super-ovulated donor animals. RLI EFS contains the surfactant PVA, embryo protein nutrients, and the antibiotics kanamycin sulphate and gentamicin. The EFS is filtered with a 0.22 µM membrane filter during the manufacturing process.

RLI EFS is prepared for commercial and research use and is *embryo culture tested*. RLI EFS has been prepackaged in 1000-mL and 2000-mL infusion bags, each with two ports: one needle septum port and one spike port.

RLI EFS may be refrigerated at 2-8°C. It should be used by its expiration date and should be discarded if a precipitate forms.

For more information about EFS, please visit www.renovalife.com.

For Animal Use Only.



Production of cattle embryos. Expanded bovine blastocysts were flushed from donor cows. Inner cell mass cells (blue) were distinguished from TE cells (pink) after immune-staining with specific antibodies. Offspring were produced after transfer of thawed embryos into recipient cows.

Ordering Information:

<http://www.renovalife.com/EFS.php>

Send your order by email: info@renovalife.com

By fax: 301-576-5078

By phone: 301-405-0298

Mon.-Fri. 9:00Am-5:00Pm Eastern time

Payment Information:

We accept Visa, MasterCard, Discover, American express cards and company checks (make check payable to: Renova Life Inc.)

