

Rabbit Embryonic Stem Cells

Cat # RB-ESC 01: 3 vials of rbESCs at 1×10^5

\$595 plus S&H

Cat # RB-ESC 02: 3 vials of rbESCs at $2-3 \times 10^5$

\$895 plus S&H

New customer is eligible for one trial package of (Cat # RB-ESC 01) HALF PRICE (\$297.5+S&H)*

*** While supply lasts. Customer is responsible for S&H fees.**

Description of the product

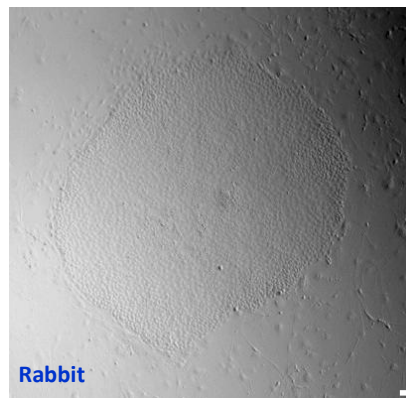
Rabbit embryonic stem cells (rbESC) are derived by Renova (RLI) scientists using our patented technology (US patent office app# 2010/0227403).

These rbESC lines are self-renewal and maintain the state of un-differentiation until passage 20-25, with our special culture condition. These rbESC showed pluripotent mRNA markers, such as Oct4, Sox2, Nanog, c-Myc, Klf4. These ESC lines are positive for AP test, Oct4, Nanog and Sox2 under immuno-fluorescent microscopy.

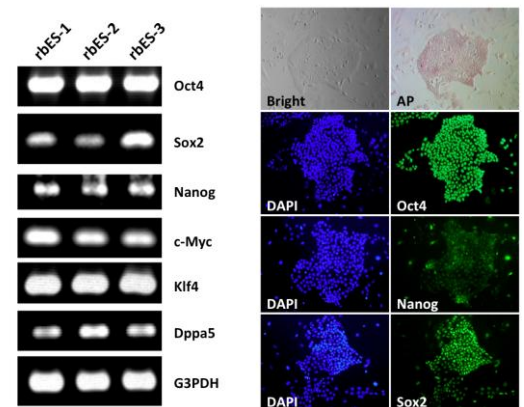
RLI derived rbESC can form embryoid bodies with expression of three primary germ layer markers.

For further information, please visit www.renovalife.com.

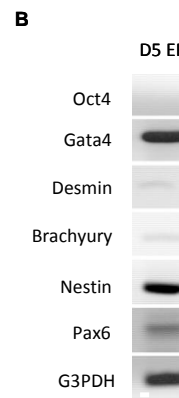
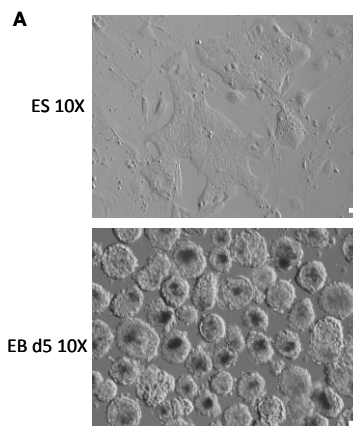
FOR RESEARCH ONLY



Rabbit embryonic stem cell culture in supplement of RbLIF



Expression of mRNA and pluripotent stem cell makers in Rabbit ESCs at P15



RbESC 2-4 P8 used for EBs derivation

- A.** The colonies of rbESC 2-4 (up panel) and its derived embryoid bodies (EBs, bottom panel).
B. EBs express all three primary germ layer markers, but not Oct4.

Ordering Information:

<http://www.renovalife.com/rbes.php>

Send your order by email: info@renovalife.com

By fax: 301-576-5078

By phone: 301-246-0868

Mon.-Fri. 9:00Am-5:00Pm Eastern time

Payment Information:

We accept Visa, MasterCard, Discover, American express cards and company checks (make check payable to: Renova Life Inc.)

